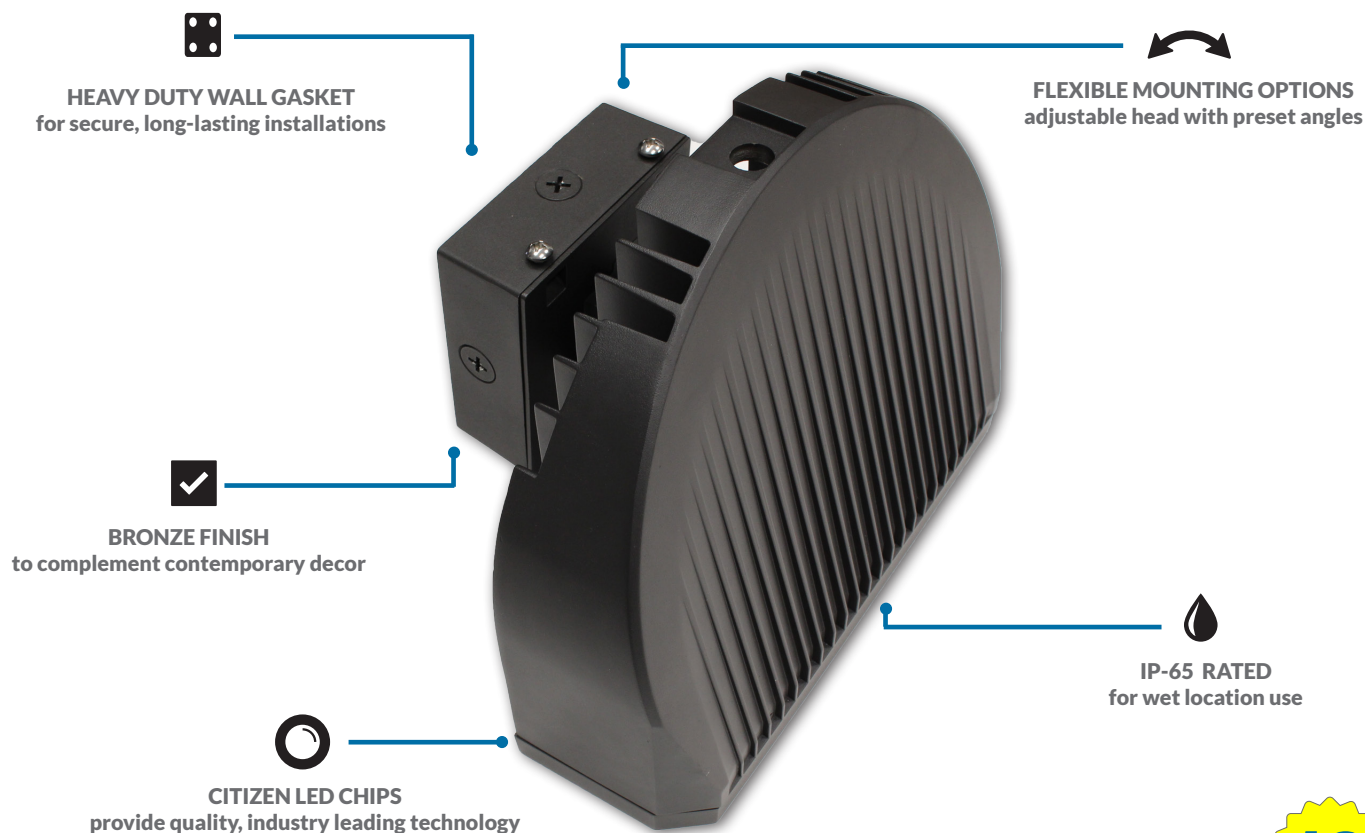




LED WALL PACK

38W / 100-277V

#WP3-385-1



10 YEAR WARRANTY

DESCRIPTION

Core's slimline wall packs are a combination of exceptional value, contemporary design, and flexible mounting options. Using industry-leading Citizen LED chips, the WP3-385-1 helps save energy costs and eliminates the need for frequent lamp or ballast replacements. These fixtures can be used as flood lights and pole mounted lights, allowing the same consistent look to be used throughout an installation.

FEATURES

POPULAR APPLICATIONS



Works with
120V Photocell



Built-in Level
for Easy Installation



PERSONNEL DOORS



EXTERIOR WALLS



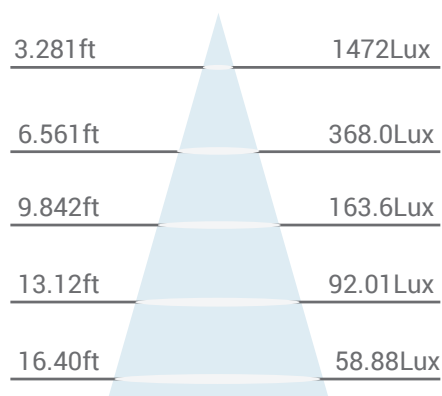
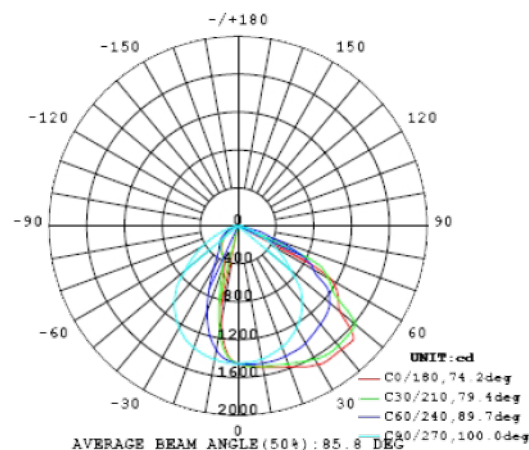
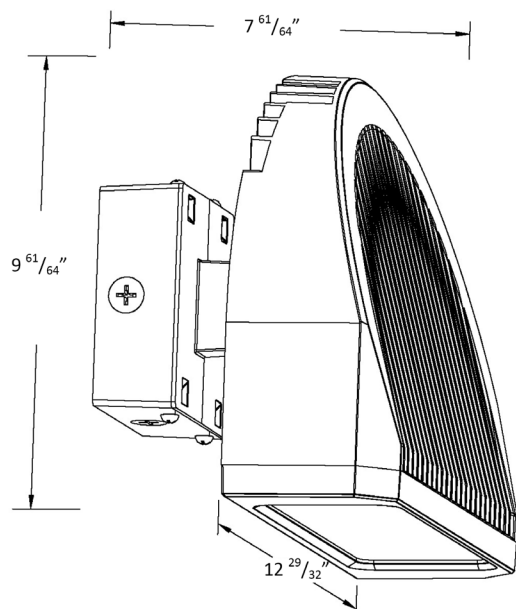
LOADING AREAS



BUILDING PERIMETERS

PRODUCT DIMENSIONS / PHOTOMETRIC SPECS / ILLUMINANCE AT A DISTANCE

SIDE VIEW



TECHNICAL DATA

LIGHT SPECIFICATIONS

Lumens **3000**

CCT **5000K**

CRI **≥80**

Beam Angle **90°**

DRIVER

Driver Type **Constant Current**

Driver Output **30-42V**

Dimmable **No**

Driver Class **Class 2**

HOURS

Rated Hours **50,000**

ELECTRICAL

Wattage **38W**

System Watts **38W**

Input Voltage **100-277V**

THD **8.67%**

CONSTRUCTION

Housing Material **Die-cast**

Lens Material **Polycarbonate Lens**

IP Rating **65**

LED CHIP

Chip Brand **CITIZEN**

Chip Type **COB**

TEMPERATURE

Minimum Start **-40°C**

Ambient Temp **40°C**

DIMENSIONS & WEIGHT

Dimensions **12 ²⁹/₃₂" x 9 ⁶¹/₆₄" x 7 ⁶¹/₆₄"**

Weight **4.21 KGS**

APPROVALS & LISTINGS

cETL **4008363**

DLC Listed **WP3-385-1**

IESNA **LM79/LM80**