



ES2-SERIES SELF-POWERED LED RUNNING MAN (THERMOPLASTIC HOUSING)



Project	
Date	
Prepared by	
Model #	ES2-RM1PC2B-3

OVERVIEW

The ES2-Series LED Running Man is constructed from durable corrosion and flame resistant thermoplastic. Powered with long life LED chips, they are the perfect choice for both new and retrofit projects.

PRODUCT HIGHLIGHTS

- Universal AC input voltage from 120-347VAC, with back-up battery
- Suitable for single and double-sided applications
- Maintenance free battery, providing a minimum emergency duration of 120 minutes
- Constructed of durable corrosion and flame resistant thermoplastic
- Status is easily determined via an LED indicating AC-ON
- Even light output with high uniformity
- 9.84 cd/m² high light output
- Includes 3 pictogram inserts
- CSA listed for Canada & the US

ELECTRICAL PARAMETERS

Input Voltage	120-347 VAC 50/60Hz	Battery Type	Sealed Nickel-Cadmium Battery
System Power	2W	Battery Charge Time	8 hours
Indicator	AC-ON, Test	Battery Discharge Time (CSA Req't: >2 hrs)	>2 hours
Battery Capacity	3.6V 1.3Ah (5W)		

LIGHTING INFORMATION

Lamp Type	LED	Illuminating Surface Uniformity	79%
Lens Material	PVC	Luminance	9.84 cd/m ²

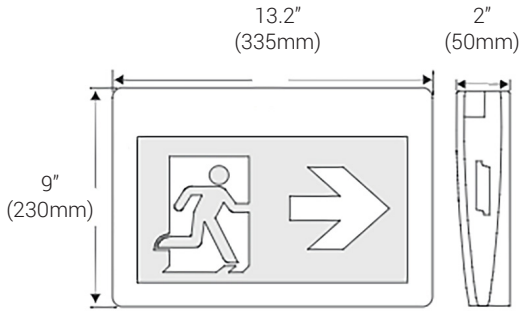
EXTERNAL & MECHANICAL SPECIFICATIONS

Housing Material	Flame Retardant ABS	Material Grade	UL-94v0
Housing Color	White	Operation Temperature Range	5°C to 30°C / 40°F to 86°F
Dimension (inch/mm)	13.2" (W) x 9" (H) x 2" (D) 335mm (W) x 230mm (H) x 50mm (D)	Installation Method	Ceiling Mount, Wall Mount, Flag Mount
Weight	1.56 kg / 3.5 lbs	Warranty	5 years

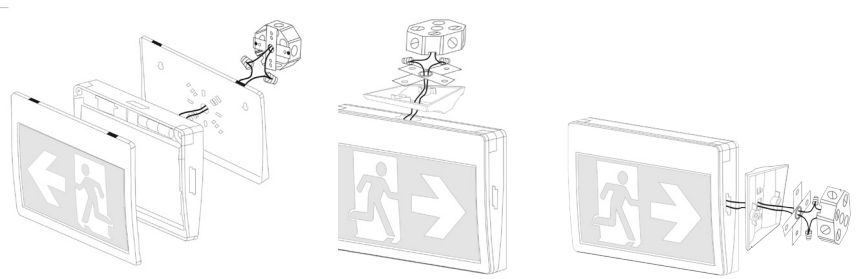
APPROVALS & LISTINGS

Safety Compliance	cCSAus	Safety Standards	CSA C22.2 No. 141-15 CAN/CSA-C22.2 No. 250.13-14
File Number	272501	Approved Locations	Damp Locations

PRODUCT DIMENSIONS



MOUNTING DIAGRAM



Wall Mount

Ceiling Mount

Flag Mount

PICTOGRAMS INCLUDED



No Indicator



Left Indicator



Right Indicator

1. Due to the special conditions of manufacturing, the typical data of optical specifications can only reflect statistical figures and do not necessarily correspond to the actual parameters of each single product which could differ from the typical data.
2. Exceeding maximum ratings for input voltage and current will cause hazardous overload and will likely destroy the LED fixture.
3. Refer to Warranty Terms & Conditions available at premiseled.com/warranty