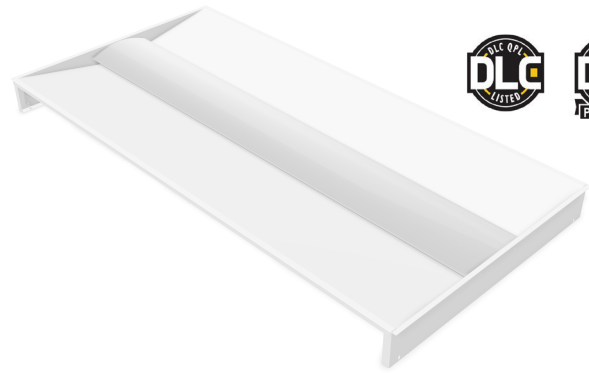


| |
|---------------|
| Project: |
| Type: |
| Date: |
| Product Code: |
| Approval: |



BLRT

The BLRT is a recessed lay-in fixture designed for use in T-bar ceilings and is well suited for use in office spaces where a clean, professional appearance is required.

FEATURES

- L70 of over 125,000 hours
- 0 - 10V dimming standard

OPTIONS

- Available in 3000K, 3500K, 4000K, 5000K, and 6500K
- Lumen packages are available from 2,000L to 6,000L
- Available in 1x4, 2x4 and 2x2 dimensions
- Housing available with passive air handling
- 90 CRI available
- NEDAP wireless controls

APPLICATIONS

- Hospitals
- Offices
- Schools

WARRANTY

- Standard 5 year system, and 10 year LED warranty

OPTICS

Powder coated body in high-reflectance white. High-efficiency extruded lens maximizes light distribution while providing diffusion of LED point sources.

ELECTRICAL

All components are UL recognized. The fixture is available in 120 - 277V and 347V.

MOUNTING

Holes provided for chain or hanger wire mounting support for T-Bar ceilings. Surface mount kits are also available (consult factory for details).

CONSTRUCTION

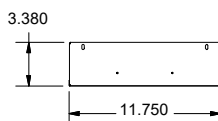
- Fixture materials are precision bent for added strength and rigidity
- Cold rolled steel body powder coated in high reflectance white.
- Access panel provided for easy wiring.
- Shallow fixture design for easy of installation and a clean, professional look.

APPROVALS

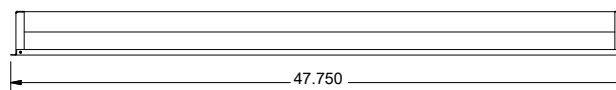
- ETL Listed
- DLC Listed

PRODUCT DIMENSIONS

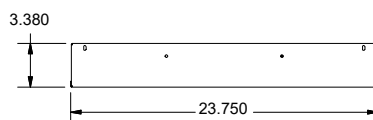
1x4 End View



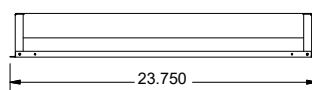
1x4 Side View



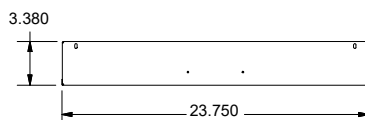
2x2 End View



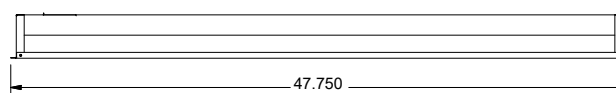
2x2 Side View



2x4 End View



2x4 Side View



PRODUCT KEY

| Fixture Type | Fixture Size | Lumen Output | CRI | Colour Temp | Driver Voltage | Options |
|--------------|--------------|--------------|------------|-------------|----------------|---|
| BLRT | | | | | | |
| | 1x4, 2x2 | 2 | 8 - 80 CRI | 30 - 3000 K | UNV | Mounting |
| | | 3 | 9 - 90 CRI | 35 - 3500 K | 347 | M15 - Surface Mount Kit |
| | | 4 | | 40 - 4000 K | | Air Handling |
| | | 4 | | 50 - 5000 K | | H20 - Housing with Passive Air Handling |
| | 2x4 | 5 | | 65 - 6500 K | | Wireless Controls |
| | | 6 | | | | WC1 - NEDAP Wireless Controls |

WATTAGE CHART - DLC APPROVED

| BLRT DLC Wattage Chart | | | | |
|------------------------|--------------|---------------------|-----------------|-----------------|
| Series | Lumen Output | Actual Lumen Output | Fixture Wattage | Lumens per Watt |
| BLRT-14-4L-840-UNV | 4.0 | 4,225 | 34.38 | 122.89 |
| BLRT-14-4L-840-347 | 4.0 | 4,335 | 34.52 | 125.58 |
| BLRT-22-4L-840-UNV | 4.0 | 4,031 | 33.87 | 119.01 |
| BLRT-22-4L-840-347 | 4.0 | 4,114 | 34.36 | 119.73 |
| BLRT-24-6L-840-UNV | 6.0 | 6,105 | 47.80 | 127.72 |
| BLRT-24-6L-840-347 | 6.0 | 6,529 | 48.33 | 135.09 |

WATTAGE CHART - NON-DLC APPROVED

| BLRT Wattage Chart | | | | | | | | |
|--------------------|--------|---------|--------|--------|---------|--------|--------|---------|
| Length | Lumens | Wattage | Length | Lumens | Wattage | Length | Lumens | Wattage |
| 1x4 | 2.0 | 16.41 | 2x2 | 2.0 | 16.41 | 2x4 | 4.0 | 34.38 |
| | 3.0 | 24.54 | | 3.0 | 24.54 | | 6.0 | 41.15 |
| | 4.0 | 34.38 | | 4.0 | 33.87 | | 8.0 | 47.80 |

* Based on UNV voltage

* Based on a Frosted lens

* Based on 4000K