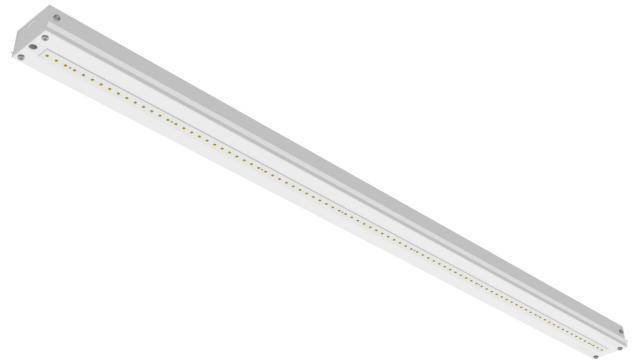


Project:
Type:
Date:
Product Code:
Approval:



**BLSPC**

The BLSPC is an LED linear cove strip fixture designed for surface and suspended mounting. It is well suited for indoor use where high efficiency, row-mountable task lighting is required. Its narrow strip design and modern profile make it an ideal fixture for task lighting applications.

**FEATURES**

- Narrow strip design allows for a sleek and modern look
- L70 up to 160,000 hours
- 0 - 10V dimming standard

**OPTIONS**

- 2', 4' and 8' lengths available
- Lumen packages are available from 1,750L to 19,000L
- Row-mounting available
- Available in 3000K, 3500K, 4000K, 5000K, and 6500K
- 90 CRI available
- NEDAP wireless controls
- Daisy chain wiring

**OPERATING TEMPERATURE**

- -20°C to 35°C

**APPLICATIONS**

- Display Cabinets
- Manufacturing
- Task Lighting
- Retail Stores

**OPTICS**

Pre-painted body in high-reflectance white. Optional wireguard is available.

**ELECTRICAL**

All components are UL recognized. This fixture is available in 120 - 277V and 347V.

**MOUNTING**

Holes provided for surface and suspended mounting, as well as knock outs for row-mounting.

**CONSTRUCTION**

- Pre-painted white steel fixture components are precision bent for added strength and rigidity
- Spot welded steel end caps for added rigidity
- Access panel provided for easy wiring
- Shallow fixture design for ease of installation and a clean professional look

**APPROVALS**

- Dry and Damp Environment Rated
- ETL Listed

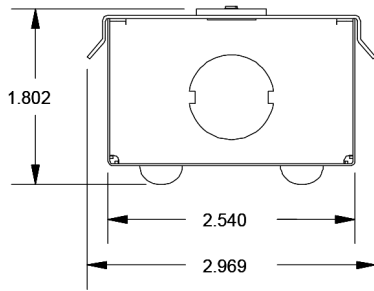
**WARRANTY**

- Standard 5 year system, and 10 year LED warranty

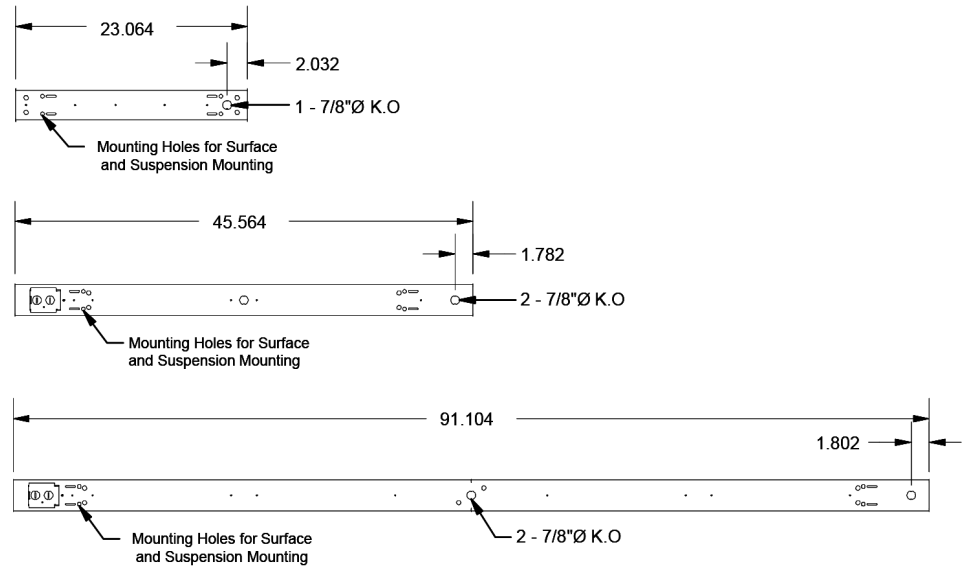
**PRODUCT DIMENSIONS**

**BLSPC**

**End View**

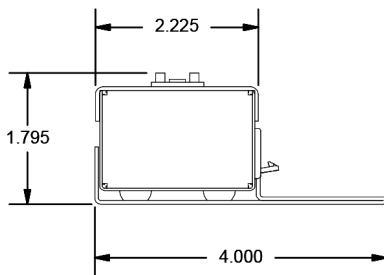


**Bottom View**

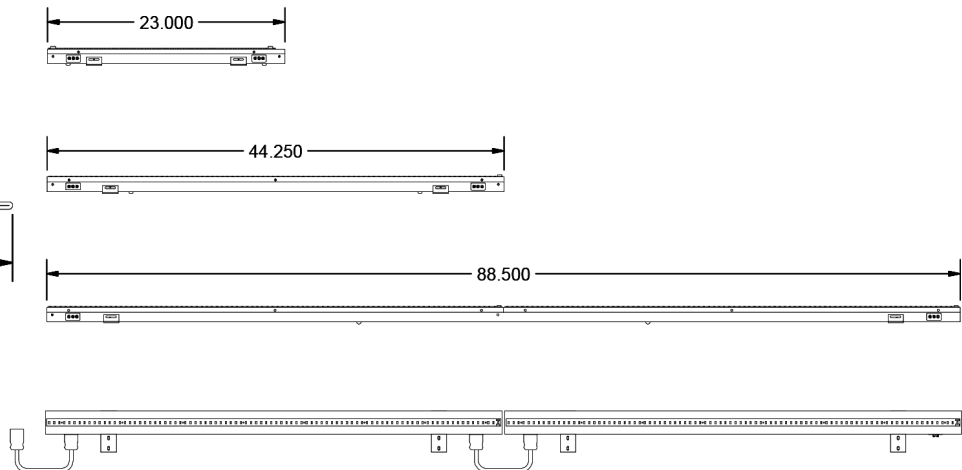


**BLSPC W27 - Daisy-Chain Connector**

**End View**



**Side View**



\*specifications may change without notice



**PRODUCT KEY**

Fixture Type	Efficacy	Fixture Size	Lumen Output	CRI	Colour Temp	Driver Voltage	Options
<b>BLSPC</b>							
	S - Standard		1.75	8 - 80 CRI	30 - 3000 K	UNV	<b>Wire Guard</b>
	H - High	2'	2.25	9 - 90 CRI	35 - 3500 K	347	G1 - White Wire Guard
			<u>2.75</u>		40 - 4000 K		<b>Wireless Controls</b>
			2.5		50 - 5000 K		WC1 - NEDAP Wireless Controls
			3.5		65 - 6500 K		<b>Mounting</b>
			4.5				M1 - V-Hangers
		4'	5.5				M3 - Aircraft Cable "Y-Toggle", 5 FT
			6.5				M7 - Row Mounting, End of Row
			7.5				M8 - Row Mounting, Middle of Row
			8.5				M23 - Aircraft Cable "Y-Toggle", 10 FT
			9.5				M24 - Pendant Mount, 3/4" Hub and Stabilizer Bracket
		8'	5				<b>Cords</b> (Specify Length)
			7				W3xx - 16/3 White Cord
			9				W4xx - 16/3 Black Cord
			11				W8xx - 16/3 Power Cord and 120 Volt Plug
			13				W27 - Daisy-Chain Connector
			15				<b>Motion Sensor</b>
			17				W26 - Photocell Motion Sensor
			19				W53 - Snap in Motion Sensor
							W57 - Dimming Motion Sensor (Dims to 50% and stays at 50% outout when unoccupied)
							<b>Colour</b>
							Blank - Standard White
							C5 - Black
							C15 - Silver

**WATTAGE CHARTS**

Standard Efficiency								
Length	Lumens	Wattage	Length	Lumens	Wattage	Length	Lumens	Wattage
2'	1.75	14.2	4'	2.5	18.3	8'	5.0	36.6
	2.25	16.4		3.5	26.6		7.0	53.2
	2.75	20.2		4.5	35.8		9.0	71.7
		5.5		40.5	11.0		81.0	
		6.5		48.8	13.0		97.6	
		7.5		57.8	15.0		115.6	
		8.5		67.0	17.0		134.0	
		9.5		71.2	19.0		142.4	

High Efficiency								
Length	Lumens	Wattage	Length	Lumens	Wattage	Length	Lumens	Wattage
2'	2.25	13.0	4'	2.5	14.7	8'	5.0	29.5
	2.75	16.2		3.5	21.0		7.0	42.0
		4.5		27.8	9.0		55.6	
		5.5		32.4	11.0		69.5	
		6.5		38.4	13.0		76.8	
		7.5		45.1	15.0		90.2	
		8.5		51.9	17.0		103.8	
		9.5		58.7	19.0		117.4	

\* Based on UNV voltage

\* Based on 4000K