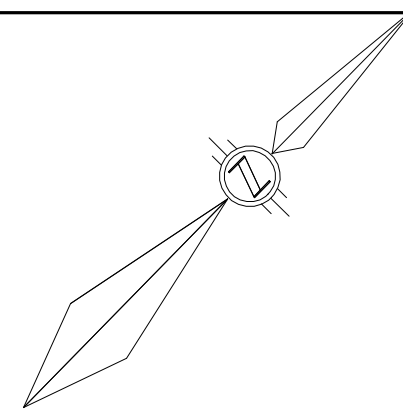


1.50m CONC. SIDEWALK



Symbol	Tag	Qty	Arrangement	Label	Description	lum. Watts
[Symbol]	A	2	BACK-BACK	FL4-2404T5-2 1ES	LED Flood 240W Double BTB	231.05
[Symbol]	B	10	SINGLE	FL4-2404T3-2 1ES	LED Flood 240W Single Type III	231.81
[Symbol]	C	2	SINGLE	FL4-1504T4-2 1ES	LED Flood 150W Single Wall Mounted Type IV	146.83
[Symbol]	E	12	TWIN	FL4-2404T4-2 1ES	LED Flood 230W Twins Type IV	232.24
[Symbol]	G	3	4 @ 90 DEGREES	FL4-2404T5-2 1ES_1	LED Flood 240W Quad Type V	231.05
[Symbol]	D	9	SINGLE	WP6-804-2	LED Traditional Wallpack 80W	80.1

Label	CalcType	Units	Avg	Max	Min	Avg/Min	Max/Min
Paved Surface_Planar	Illuminance	Fc	6.45	20.9	1.3	4.96	16.08

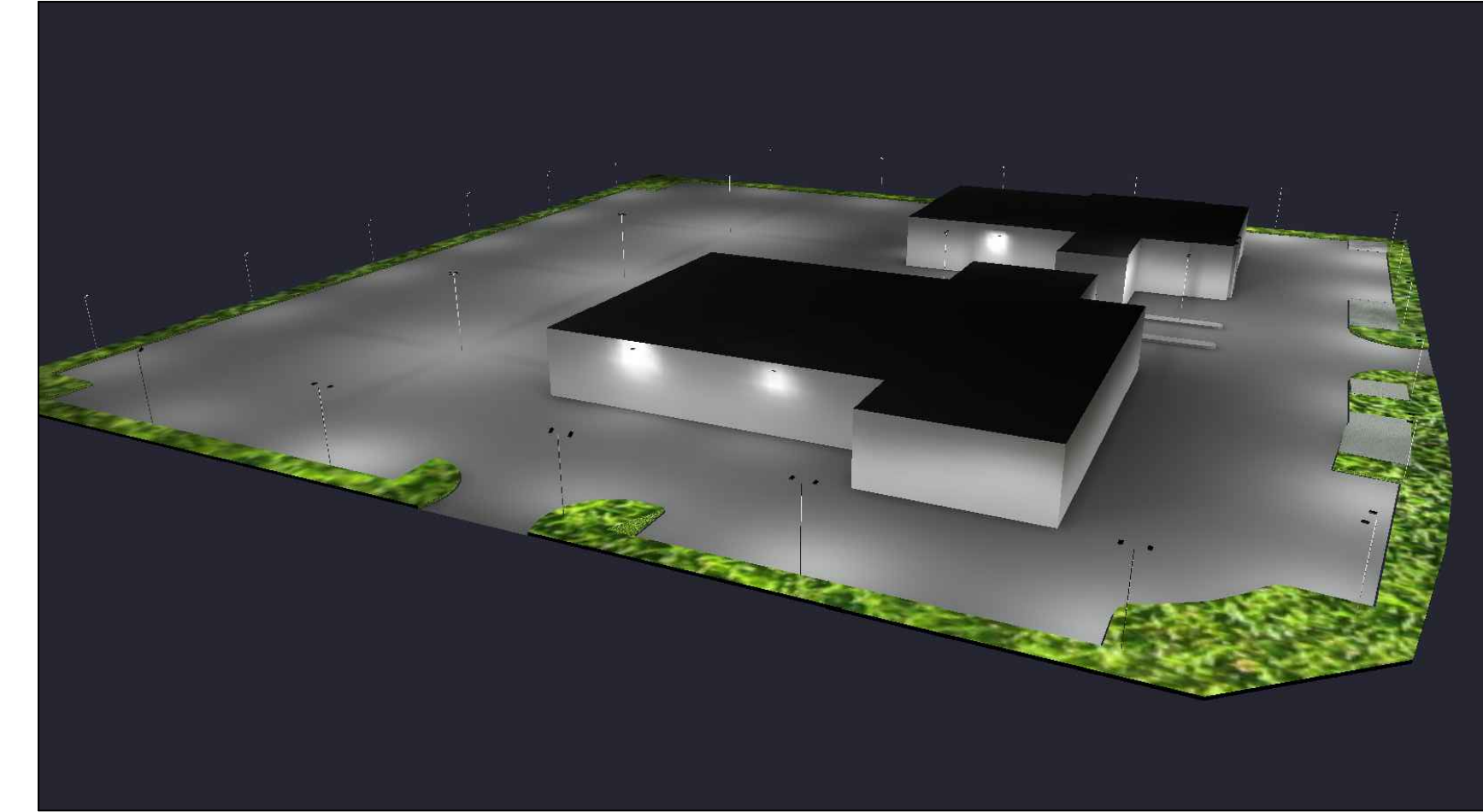
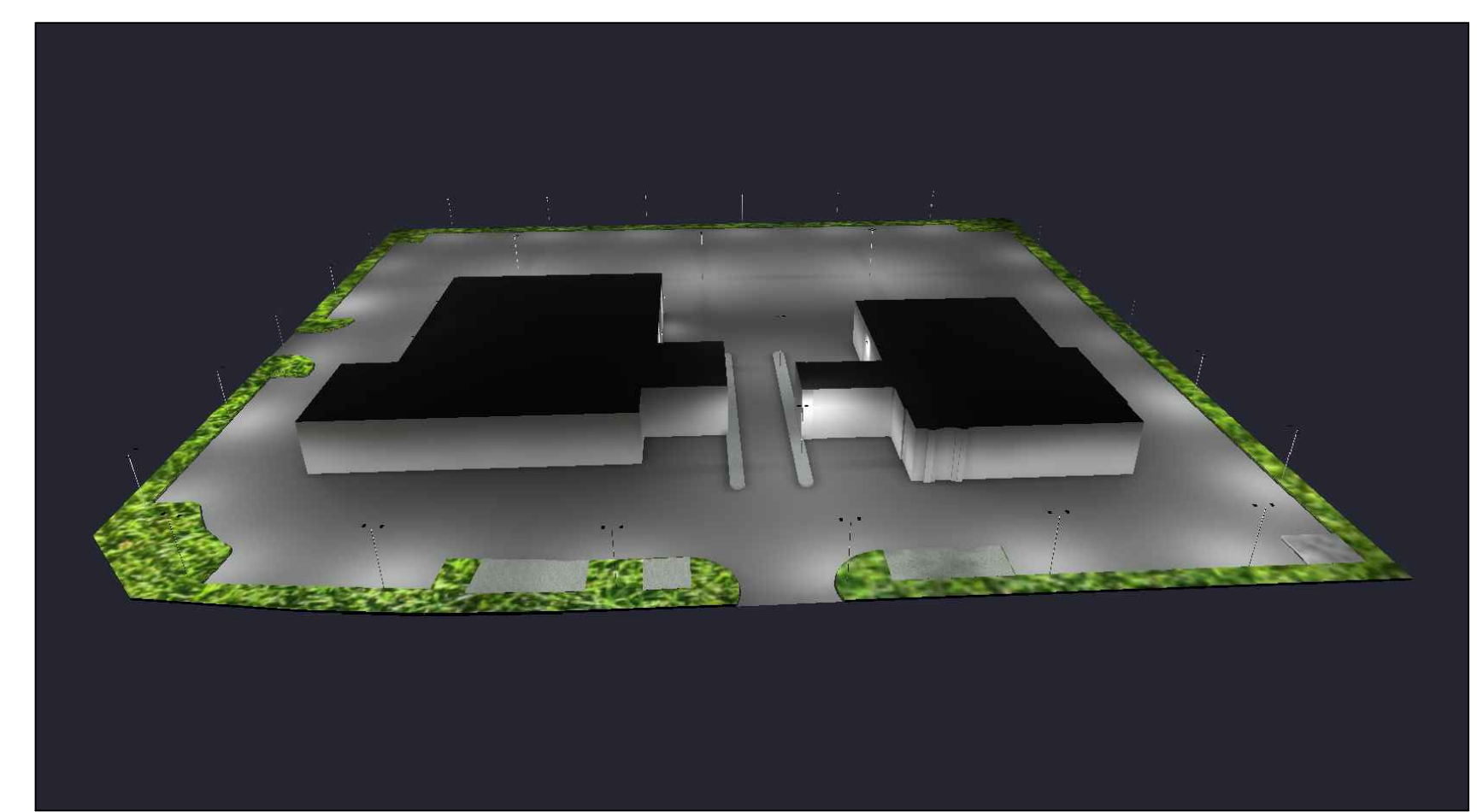
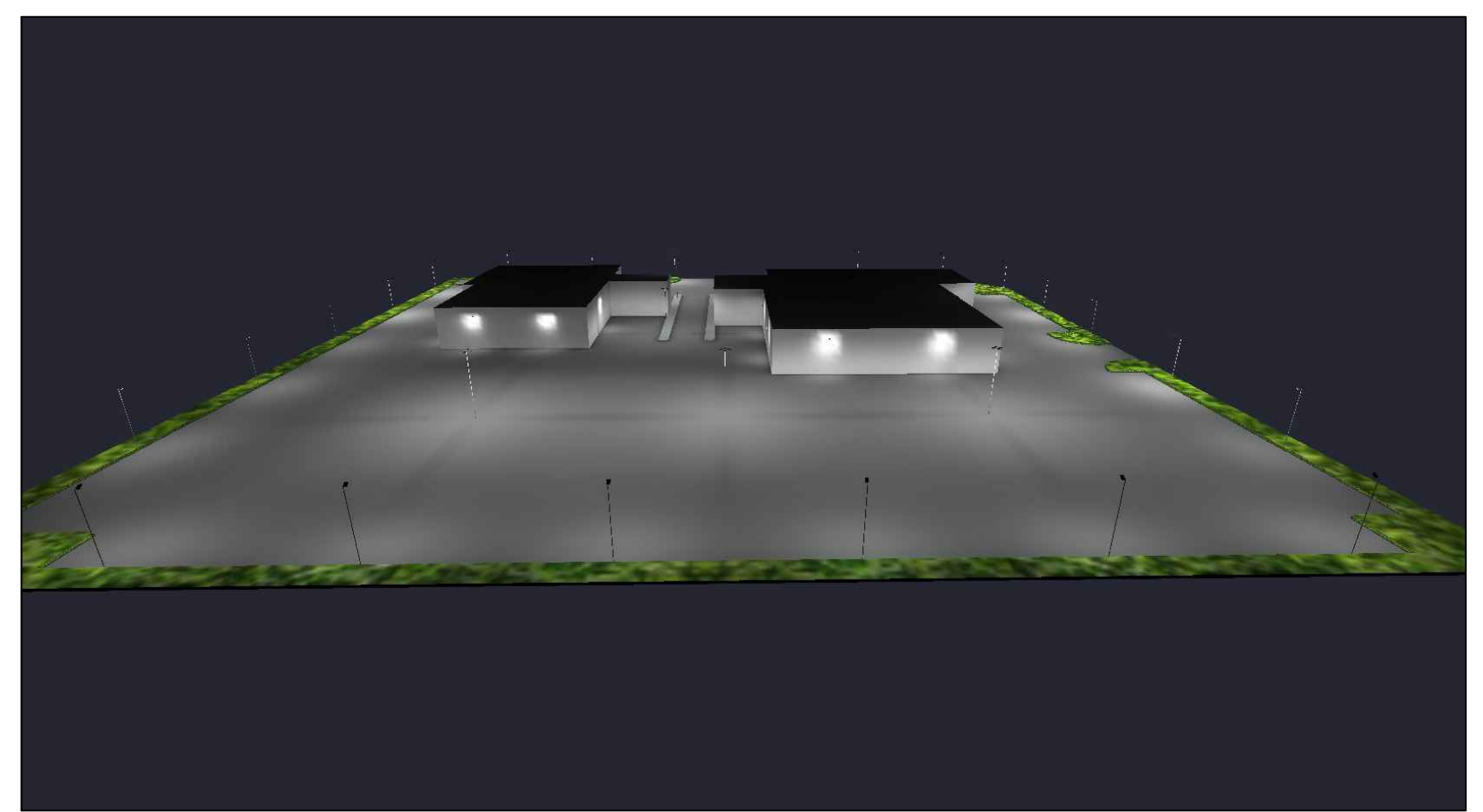
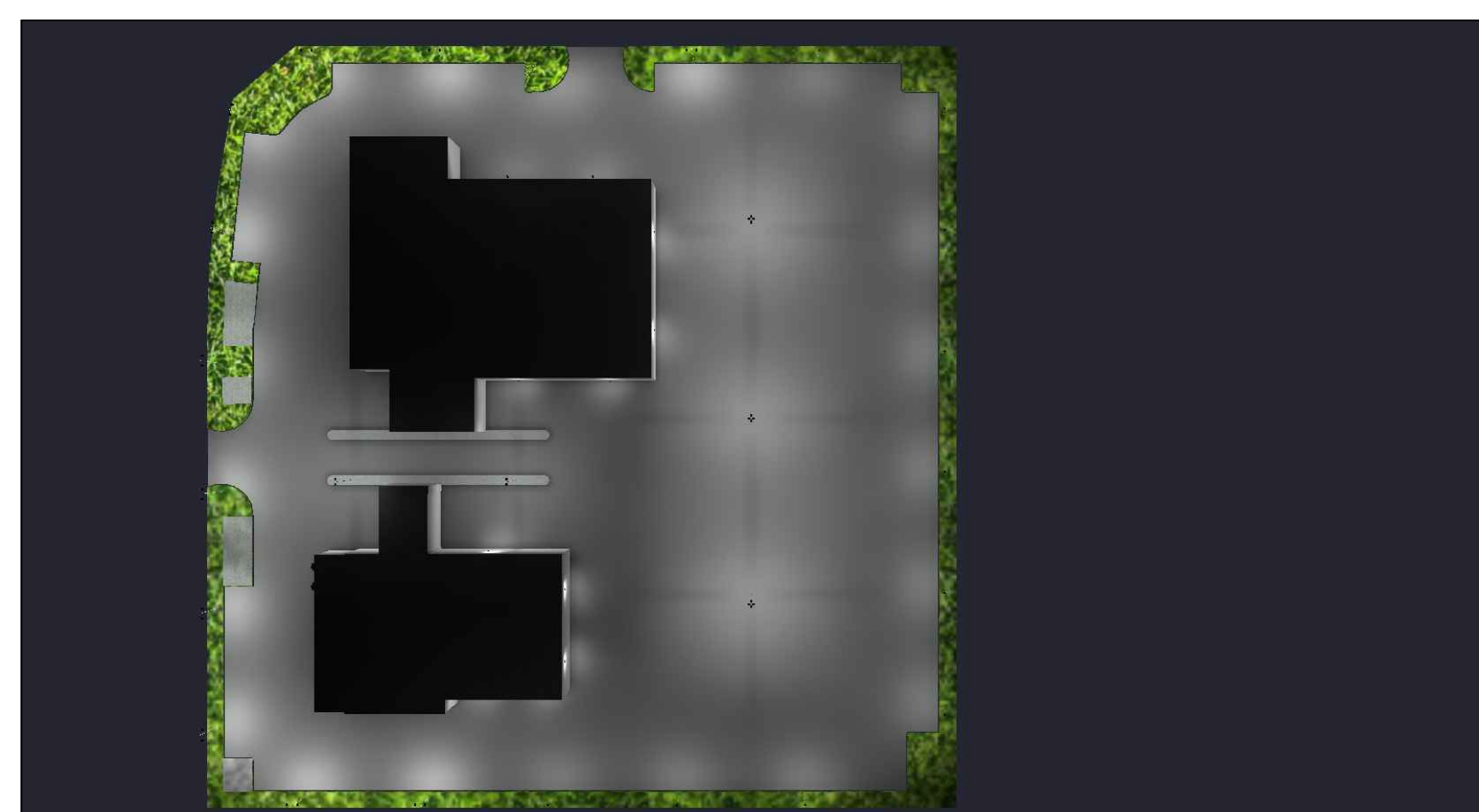
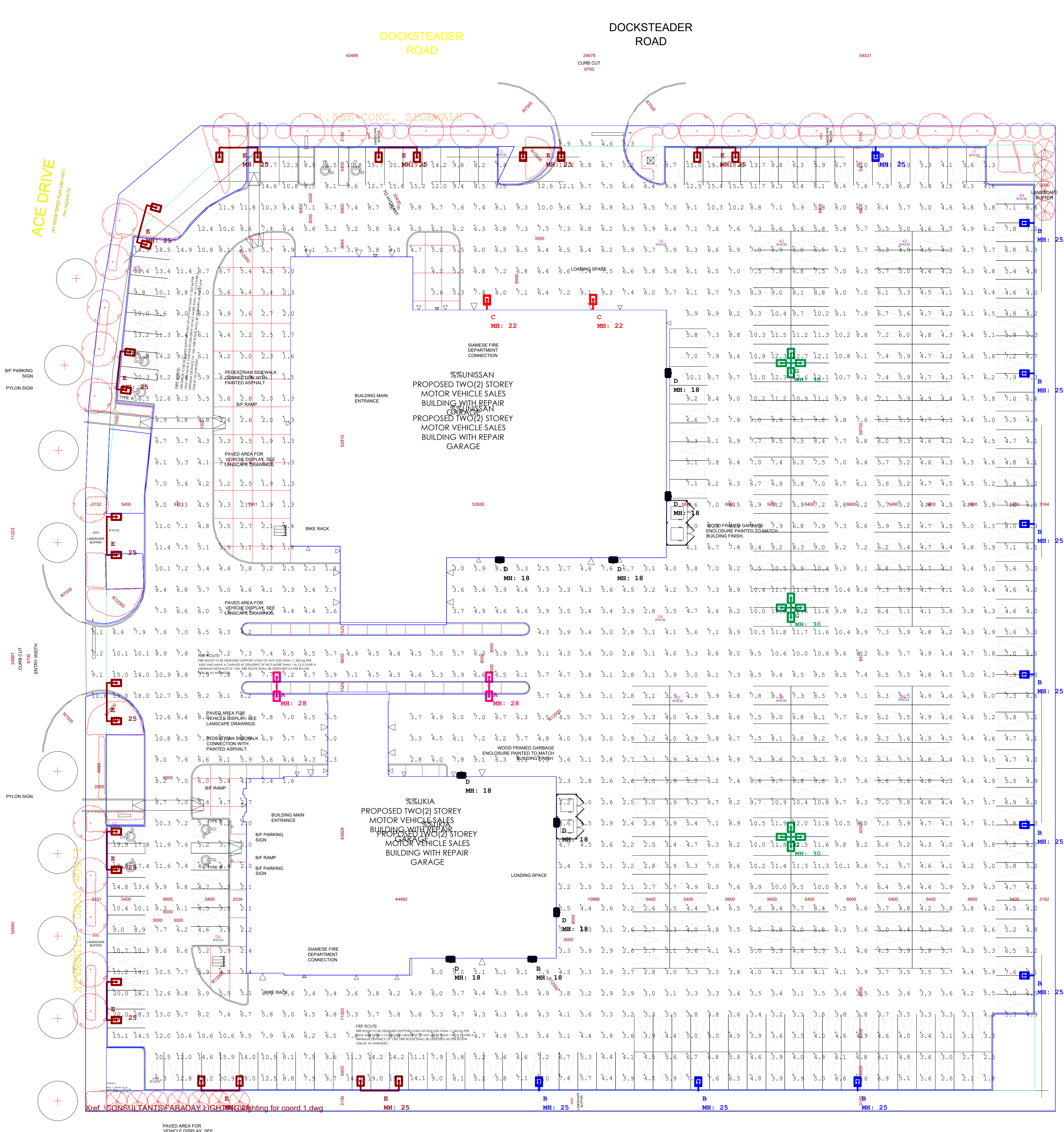
Label	Area	Total Watts	LPD
LPDArea_1	192046	12370.98	0.064

LumID	Label	z	Orient	Tilt
1	FL4-2404T4-2 1ES	25	270	0
2	FL4-2404T4-2 1ES	25	270	0
3	FL4-2404T4-2 1ES	25	270	35
4	FL4-2404T4-2 1ES	25	270	0
5	FL4-2404T3-2 1ES	25	270	35
6	FL4-2404T4-2 1ES	25	345	0
7	FL4-2404T3-2 1ES	25	180	35
8	FL4-1504T4-2 1ES	22	90	25
9	FL4-1504T4-2 1ES	22	90	0
10	FL4-2404T5-2 1ES_1	30	0	0
11	FL4-2404T4-2 1ES	25	354	0
12	WP6-804-2	18	0	0
13	FL4-2404T3-2 1ES	25	180	35
14	WP6-804-2	18	0	0
15	FL4-2404T3-2 1ES	25	180	35
16	FL4-2404T4-2 1ES	25	0	0
17	WP6-804-2	18	270	0
18	WP6-804-2	18	270	0
19	FL4-2404T5-2 1ES_1	30	0	0
20	FL4-2404T3-2 1ES	25	180	35
21	FL4-2404T5-2 1ES	28	90	0
22	FL4-2404T5-2 1ES	28	90	0
23	FL4-2404T4-2 1ES	25	0	0
24	WP6-804-2	18	90	0
25	WP6-804-2	18	0	0
26	FL4-2404T3-2 1ES	25	180	35
27	FL4-2404T5-2 1ES_1	30	0	0
28	FL4-2404T4-2 1ES	25	0	0
29	WP6-804-2	18	0	0
30	WP6-804-2	18	270	0
31	WP6-804-2	18	270	0
32	FL4-2404T3-2 1ES	25	180	35
33	FL4-2404T4-2 1ES	25	0	0
34	FL4-2404T4-2 1ES	25	90	0
35	FL4-2404T4-2 1ES	25	90	0
36	FL4-2404T3-2 1ES	25	90	35
37	FL4-2404T3-2 1ES	25	90	35
38	FL4-2404T3-2 1ES	25	90	35

COACHWAY CRES

1.8m CONC. SIDEWALK

BLOCK 1 PART 7



Notes :
 I Certify that this lighting proposal will provide the levels of illumination as noted and horizontal illumination at road level will not be less than 0.1 Foot candles along routes designated as average illumination.
 Calculation points are set on 10'x10' grid.
 Luminaire location summary Table dimensions are in Ft.
 Illuminance Values are in Foot Candle.
 Lighting Fixtures Footprint/symbol are zoomed for better viewing purpose and not to scale.

Product Image



LED Flood



LED Wallpack

DISCLAIMER : Calculations have been performed on AG32 Lighting Simulation program. Some differences between measured values and calculated results may occur due to tolerances in calculation methods, testing procedures, component performance, measurement techniques, and field conditions such as voltage and temperature variations. Input data used to generate the attached calculations such as room dimensions, reflectance's, furniture and architectural elements significantly affect the lighting calculations. If the real environment conditions do not match the input data, differences will occur between measured value and calculated values.

All Dimensions are in mm.



04	ISSUED FOR SITE PLAN APPROVAL	2003.25	KE
03	ISSUED FOR SITE PLAN APPROVAL	19.10.09	KE
02	ISSUED FOR SITE PLAN APPROVAL	19.03.26	KE
01	ISSUED FOR SITE PLAN APPROVAL	18.12.05	KE
NO	Revision	Date	By

Project Name and Address:
 PERFORMANCE 410
 NISSAN AUTO DEALERSHIP
 ACE DRIVE, BRAMPTON

Lighting Design and Photometric Analysis By :
 Faraday Lighting



Approved By :
 Thomas Zsolt, P. Eng.
 Prepared By: Kiran Ekhande, EIT

Drawing Name :
 Exterior Lighting Layout_Nissan
 Scale : 1:300

Drawing Number :
 FAR/LL-04/2018
 Date :
 Mar 25, 2020
 Page : ARCH E 1