







**Luminaire Schedule**

Symbol	Tag	Qty	Label	Arrangement	Description	Wattage	Lumens
	LT4	1	DTL8-750-35K-UH-FR	SINGLE	Linear Pendant 8 ft DTL8-60-35K-UH-FR-X-X-X-3	180	N.A.
	LT2	67	BLRT-22-4L-840-UN	SINGLE	LED Troffer 2x2 recessed	34.5	N.A.
	LT5	4	ZIPCLOUD15-30-4K	SINGLE	ZIPCLOUD 18Inch 2400Lm	30	N.A.
	LT1	65	LRG6-40K	SINGLE	6Inch Round Recessed Gimbal Downlight	14.563	1306.201
	LT3	4	LRG3-40K	SINGLE	LRG3-40K Gimbal Recessed 3Inch pot	7.047	624.056
	LT6	1	CS3-2204-3	SINGLE	2FT Commercial Strip 20W	20.3	2541

**Calculation Summary**

Label	CalcType	Units	Avg	Max	Min	Avg/Min	Max/Min
Cubicle 122	Illuminance	Fc	44.02	57.3	31.5	1.40	1.82
Cubicle Area	Illuminance	Fc	45.63	61.5	19.8	2.30	3.11
Hallway	Illuminance	Fc	46.86	58.0	42.0	1.12	1.38
Lounge Reception	Illuminance	Fc	31.23	44.9	15.1	2.07	2.97
Meeting Rm Big 121	Illuminance	Fc	59.21	113	36.9	1.60	3.05
Offices East Side	Illuminance	Fc	41.22	64.6	24.1	1.71	2.68
Offices West Side__1	Illuminance	Fc	39.62	57.4	25.6	1.55	2.24
Server Rm 112	Illuminance	Fc	39.83	47.2	33.0	1.21	1.43
Small Meeing rooms	Illuminance	Fc	64.16	67.8	61.2	1.05	1.11
Storage Rm 111	Illuminance	Fc	46.58	61.6	30.7	1.52	2.01
Training Room	Illuminance	Fc	48.28	60.4	36.0	1.34	1.68

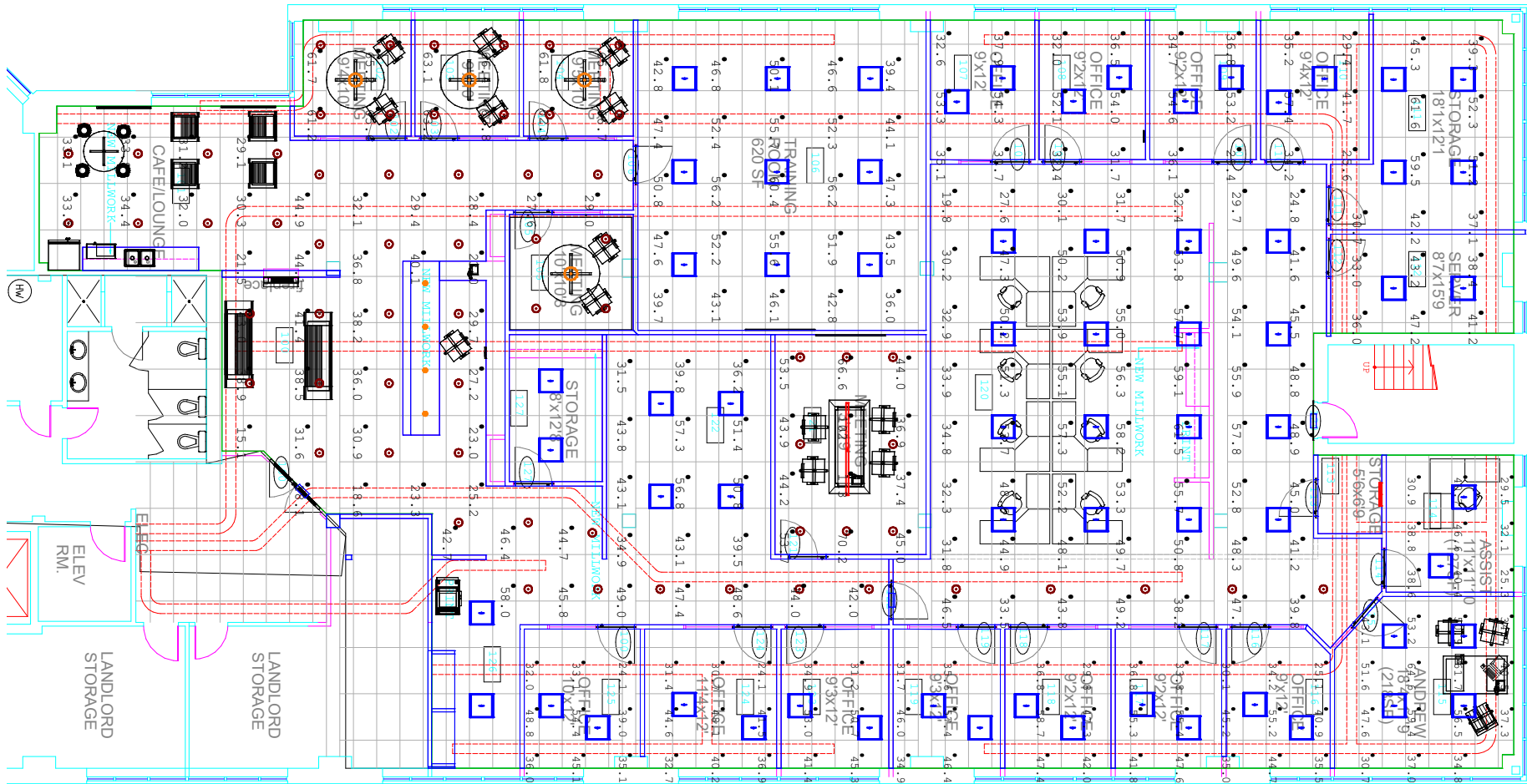
**Rev. 00**
**Project : Sparks office Lighting**
**Faraday Lighting** 211 Consumers Rd Suite 308, Toronto ON M2J 4G8

Ph: 416-495-4369, kekhande@faradaylighting.ca, www.faradaylighting.com

Prepared By: Kiran E. /Sales Rep : DB /Date: 2020-05-07

DISCLAIMER : Calculations have been performed according to IESNA standards and good practice. Some differences between measured values and calculated results may occur due to tolerances in calculation methods, testing procedures, component performance, measurement techniques, and field conditions such as voltage and temperature variations. Input data used to generate the attached calculations such as room dimensions, reflectance's, furniture and architectural elements significantly affect the lighting calculations. If the real environment conditions do not match the input data, differences will occur between measured value and calculated values.

Page 1 of 5



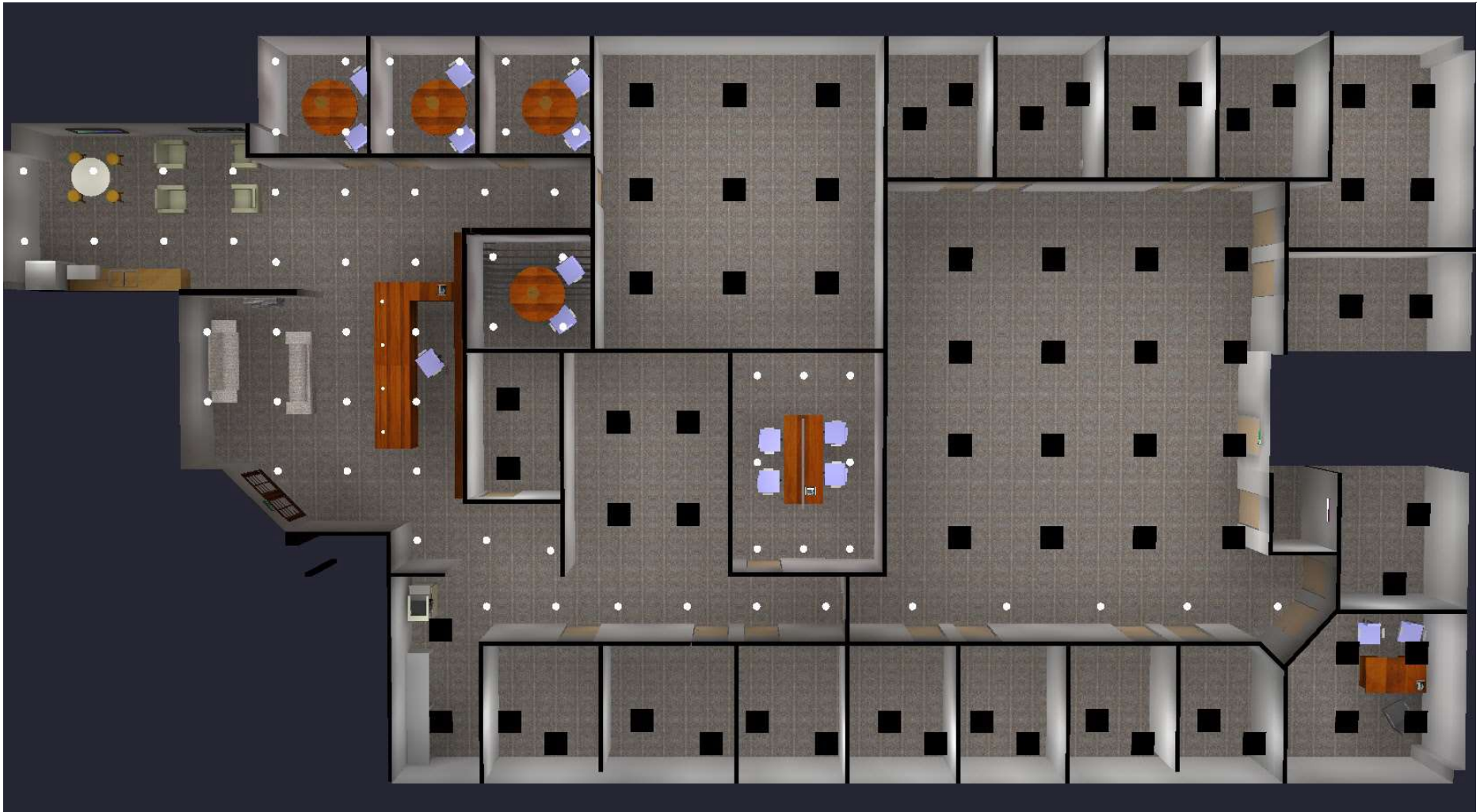
Rev. 00

Project : Sparks office Lighting

**Faraday Lighting** 211 Consumers Rd Suite 308, Toronto ON M2J 4G8  
 Ph: 416-495-4369, kekhande@faradaylighting.ca, www.faradaylighting.com

Prepared By: Kiran E. /Sales Rep : DB /Date: 2020-05-07

DISCLAIMER : Calculations have been performed according to IESNA standards and good practice. Some differences between measured values and calculated results may occur due to tolerances in calculation methods, testing procedures, component performance, measurement techniques, and field conditions such as voltage and temperature variations. Input data used to generate the attached calculations such as room dimensions, reflectance's, furniture and architectural elements significantly affect the lighting calculations. If the real environment conditions do not match the input data, differences will occur between measured value and calculated values.



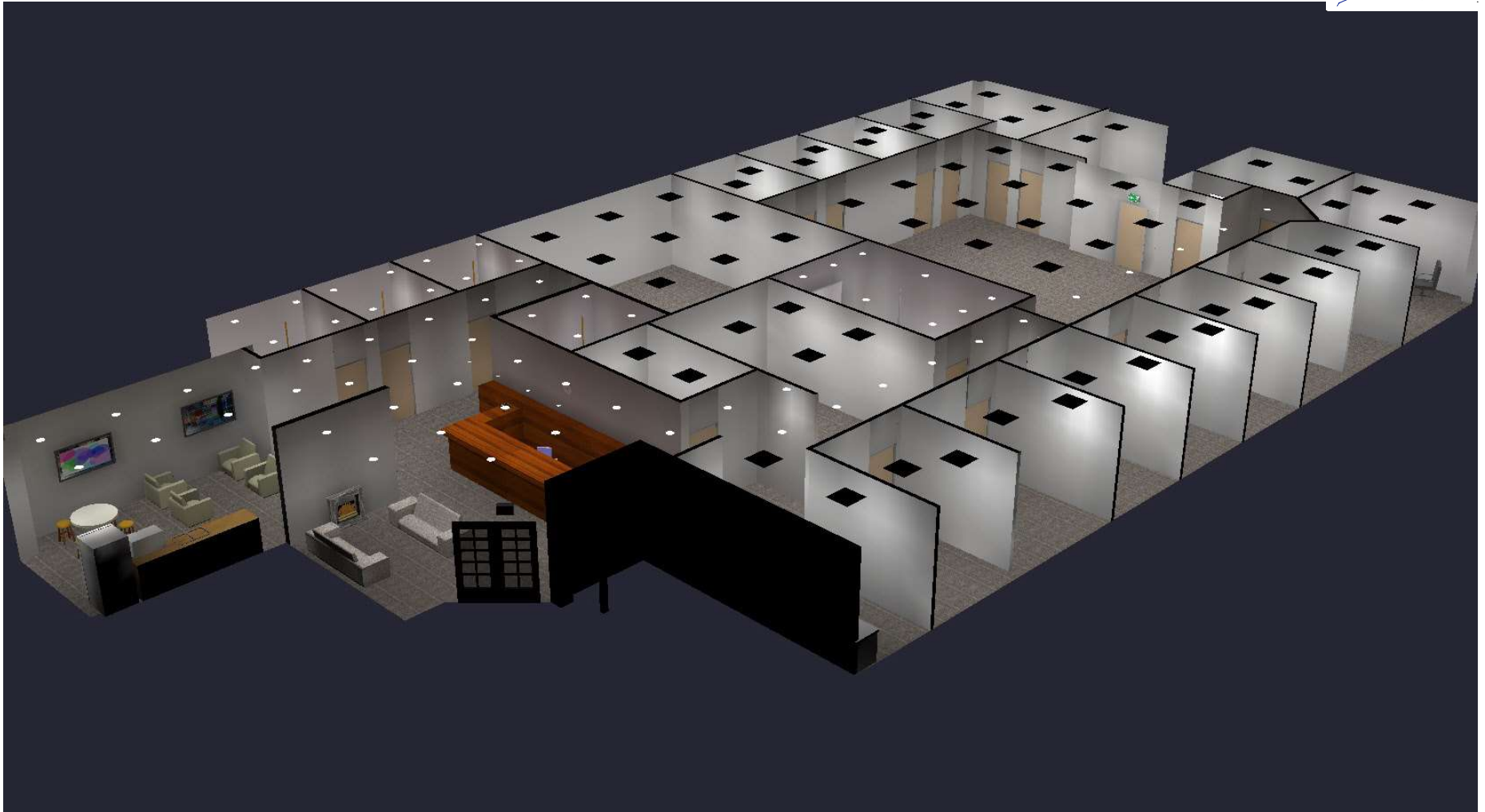
Rev. 00

**Project : Sparks office Lighting**
**Faraday Lighting** 211 Consumers Rd Suite 308, Toronto ON M2J 4G8  
 Ph: 416-495-4369, kekhande@faradaylighting.ca, www.faradaylighting.com

Prepared By: Kiran E. /Sales Rep : DB /Date: 2020-05-07

DISCLAIMER : Calculations have been performed according to IESNA standards and good practice. Some differences between measured values and calculated results may occur due to tolerances in calculation methods, testing procedures, component performance, measurement techniques, and field conditions such as voltage and temperature variations. Input data used to generate the attached calculations such as room dimensions, reflectance's, furniture and architectural elements significantly affect the lighting calculations. If the real environment conditions do not match the input data, differences will occur between measured value and calculated values.

Page 3 of 5



Rev. 00

**Project : Sparks office Lighting****Faraday Lighting** 211 Consumers Rd Suite 308, Toronto ON M2J 4G8  
Ph: 416-495-4369, kekhande@faradaylighting.ca, www.faradaylighting.com

Prepared By: Kiran E. /Sales Rep : DB /Date: 2020-05-07

DISCLAIMER : Calculations have been performed according to IESNA standards and good practice. Some differences between measured values and calculated results may occur due to tolerances in calculation methods, testing procedures, component performance, measurement techniques, and field conditions such as voltage and temperature variations. Input data used to generate the attached calculations such as room dimensions, reflectance's, furniture and architectural elements significantly affect the lighting calculations. If the real environment conditions do not match the input data, differences will occur between measured value and calculated values.

Page 4 of 5



Rev. 00

**Project : Sparks office Lighting**

**Faraday Lighting** 211 Consumers Rd Suite 308, Toronto ON M2J 4G8  
 Ph: 416-495-4369, kekhande@faradaylighting.ca, www.faradaylighting.com

Prepared By: Kiran E. /Sales Rep : DB /Date: 2020-05-07

DISCLAIMER : Calculations have been performed according to IESNA standards and good practice. Some differences between measured values and calculated results may occur due to tolerances in calculation methods, testing procedures, component performance, measurement techniques, and field conditions such as voltage and temperature variations. Input data used to generate the attached calculations such as room dimensions, reflectance's, furniture and architectural elements significantly affect the lighting calculations. If the real environment conditions do not match the input data, differences will occur between measured value and calculated values.