

Date		Project	
Type		Part Number	



ALL-IN-ONE PERFORMANCE LIGHTING

# FLARE Series

## Slim Square Canopy

The Flare series Square canopy is DLC Premium listed and ETL for wet locations with a rating of IP65. It's quick to install and aesthetically pleasing construction, with die-cast aluminum housing and shatter-resistant polycarbonate prismatic lens makes this fixture perfect for most outdoor lighting needs. Dustproof, sealed structure, 1/2" threaded conduit entrances on each side provide versatility and unmatched quality. This fixture comes with an option for microwave occupancy or photocell sensor, installed with a DC adapter. Ideal applications for parking garage, canopy, walkway and entrance lighting etc.



### PRODUCT FEATURES

- Aluminum Alloy Construction
- Polycarbonate Lens
- Black Powder-Coated Finish
- Operating temperature: -40°F to +104°F (-40°C to +40°C)
- IP65 Rated Wet Location
- 0-10V Dimming
- Rated Lifespan: L70 ~100,000 hrs
- 7 year warranty

### KEY SPECIFICATIONS

<b>Voltage</b>	120-347V
<b>Wattage</b>	Selectable Wattage R1: 25/30/35/40W R2: 45/55/65/75W
<b>Efficacy</b>	130 lm/W
<b>Power Factor</b>	>0.9
<b>CCT</b>	Selectable: 3000K, 4000K, 5000K
<b>CRI</b>	>80
<b>Lumens</b>	Up to 9,750 lm
<b>Beam Angle</b>	140°
<b>Dimming</b>	0-10V
<b>Mounting</b>	Surface
<b>Applications</b>	Commercial, Warehouse, Gas Stations, Parking Garages


 EMERGENCY  
 BACKUP READY

 RENO SMART  
 NLC SYSTEM

 STANDALONE  
 SENSOR OPTIONS

## SPECIFICATIONS – R1 MULTI POWER (25/30/35/40W)

Order#	Model	Wattage	Voltage	Lumens	Efficacy	CCT
R52017	RENO-SCP-40W-MW-DV-MCCT-R1	25/30/35/40W	120-347V	3250/3900/ 4550/5200 lm	130 lm/W	30/40/5000K

## SPECIFICATIONS – R2 MULTI POWER (45/55/65/75W)

Order#	Model	Wattage	Voltage	Lumens	Efficacy	CCT
R52018	RENO-SCP-75W-MW-DV-MCCT-R2	45/55/65/75W	120-347V	5850/7150/ 8450/9750 lm	130 lm/W	30/40/5000K

## DLC CERTIFICATION

Order#	Model	Application	DLC Standard	DLC Premium
R52017	RENO-SCP-40W-MW-DV-MCCT-R1	Parking Garage Luminaires	–	S-ICGLFW
R52018	RENO-SCP-75W-MW-DV-MCCT-R2	Parking Garage Luminaires	–	S-I0LD5C

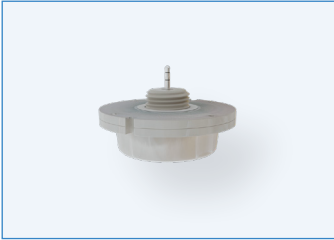
## ACCESSORIES – EMERGENCY LED DRIVERS



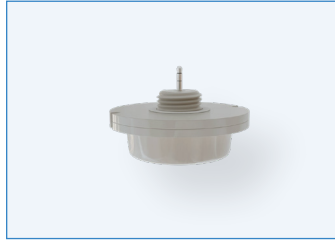
R83010  
RENO-EM-EX15  
All Weather Emergency Driver  
(100-347V AC, 50-60Hz, 15W)

Order#	Model	Description
R83010	RENO-EM-EX15	All Weather Emergency Driver (100-347V AC, 50-60Hz, 15W)

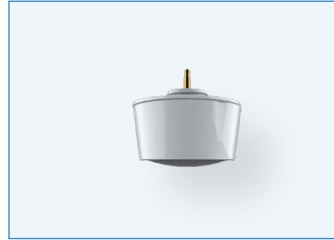
## ACCESSORIES – STANDALONE SENSOR & REMOTES



R71002  
RENO-SENSOR-MW-H  
Bi-Level Microwave Sensor



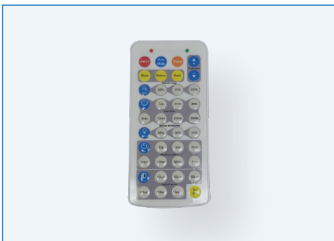
R72001  
RENO-SENSOR-PC-S  
Photocell Sensor



R74004  
RENO-SENSOR-PIR3.5-PH15M  
Long Detection Range PIR  
Sensor



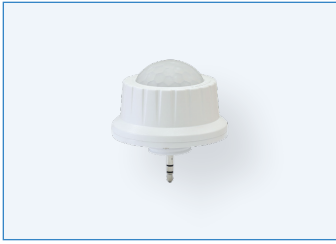
R73002  
RENO-REMOTE-H  
Remote Control for Standalone  
Sensors (With Screen)



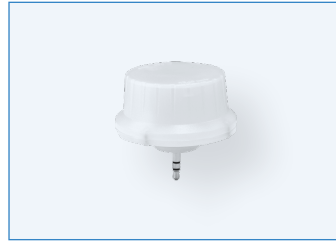
R73005  
RENO-REMOTE-H-ECO  
Remote controller for Highbays  
(without screen)

Order#	Model	Description
R71002	RENO-SENSOR-MW-H	Bi-Level Microwave Sensor
R72001	RENO-SENSOR-PC-S	Photocell Sensor
R74004	RENO-SENSOR-PIR3.5-PH15M	Long Detection Range PIR Sensor
R73002	RENO-REMOTE-H	Remote Control for Standalone Sensors (With Screen) Note: Only 1 needed per project.
R73005	RENO-REMOTE-H-ECO	Remote Control for Standalone sensors (Without Screen) Note: Only 1 needed per project

## ACCESSORIES – RENO SMART NLC SENSORS



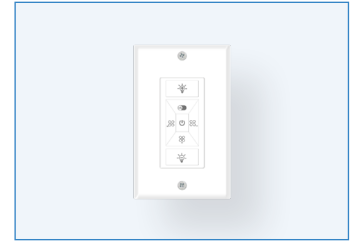
R75001  
RENO-RS-JK-BPDN-12V  
Bluetooth 3.5mm Jack PIR  
Sensor for RENO Smart NLC  
System



R75002  
RENO-RS-JK-BMWM-12V  
Bluetooth 3.5mm Jack  
Microwave Sensor for RENO  
Smart NLC System



R75201  
RENO-RS-GW-BCNW  
Ceiling Mounted Gateway for  
RENO Smart NLC System



R75302  
RENO-RS-RC-BNNG  
7-Key Smart Wall Switch for  
RENO Smart NLC System

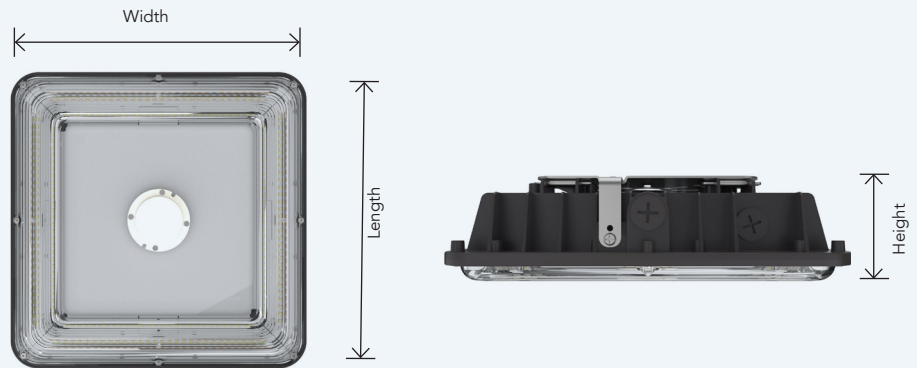


R75301  
RENO-RS-RC-BNND  
5-Key Reset Remote Controller

Order#	Model	Description
R75001	RENO-RS-JK-BPDN-12V	Bluetooth 3.5mm Jack PIR Sensor for RENO Smart NLC System
R75002	RENO-RS-JK-BMWM-12V	Bluetooth 3.5mm Jack Microwave Sensor for RENO Smart NLC System
R75201	RENO-RS-GW-BCNW	Ceiling Mounted Gateway for RENO Smart NLC System
R75302	RENO-RS-RC-BNNG	7-Key Smart Wall Switch for RENO Smart NLC System
R75301	RENO-RS-RC-BNND	5-Key Reset Remote Controller

## DIMENSIONS

R1/R2



Length: 10.24" (260 mm)

Width: 10.24" (260 mm)

Height: 3.46" (88 mm)

Weight: 5.25 lbs (2.38 kg)