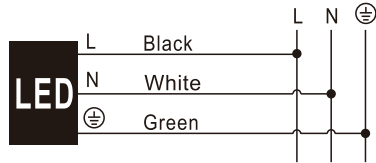


Date:	Type:
Project Name:	Part Number:

INSTALLATION INSTRUCTION

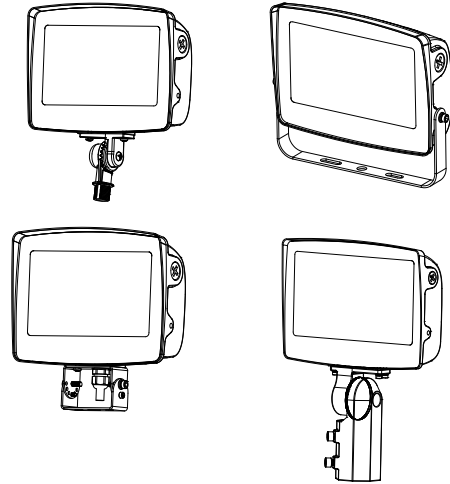


Wiring Diagram



? Troubleshooting

Problem	Possible Cause	Solutions
LEDs stop working	The power line is improperly connected.	Reconnect the power cable.
	The power plug is loose.	Firmly plug the power in.
	The LED driver malfunctions.	Replace with new driver.
	The LED chip is damaged.	Replace with new LEDs.
LEDs flash on and off	The output of the driver is abnormal.	Replace with new driver.
	The LED chip breaks down.	Replace with new LED chip.



15W/30W/55W/75W



RENOTM
LIGHTING

Date:

Type:

Project Name:

Part Number:

Reminder

We appreciate your purchase!
Please read the instruction manual before installation and keep it for future reference.

Warning

- To avoid damage, falling, electric shock or fire, please do not modify the lamp or replace accessories without confirming with the supplier first.
- Please authorize only qualified personnel to install the lamp and ensure they follow the instruction manual. Any improper installation might cause falling, electric shock, fire, or other injury, damage or hazard.
- Please disconnect power before installation or any maintenance of the lamp.
- Please disconnect power if it begins to smoke or emit odors, since fire or electric shock may occur. Ask a qualified person to inspect and maintain the luminaire.
- Please do not dismantle the lamp without the supplier's authorization.
- Please do not touch the power supply when the lamp is operating.
- If the external flexible cable or cord of the luminaire is damaged, it should only be replaced by the supplier, a service agent or qualified person.
- Terminal block not included. The electrical fitting must be installed by a licensed electrician.
- The light source contained in this luminaire shall only be replaced by the manufacturer or his service agent or a similar qualified person.
- Only to be installed outside arms reach.
- For use in environments where an accumulation of non-conductive dust on the luminaire may be expected.

Caution risk of electric shock



Application

With aluminum heat sink, high-brightness SMD chip, high-efficiency constant current and voltage power driver, LED Flood Light is designed for applications including Facades, Landscapes, Public places, Retail and residential complexes, hospitality, Sign lighting, etc.

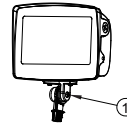
Technical Parameters

Product specification	15W	30W	55W	75W	100W	120W	150W
Input Voltage	120-277VAC						
Working Temperature	-22°F to +133°F (-30°C to +45°C)						
Storing Temperature	-40°F to +158°F (-40°C to +70°C)						
Distribution	7H7V			7H7V			
Mounting Options	15w~75w-1/2" Knuckle Mount / U Bracket / Trunnion Mount 100w~150w 1/2" Knuckle Mount /SF / U Bracket / Trunnion Mount						

Installation Instructions

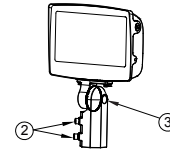
1/2" Knuckle Mount

- Secure the fixture to a 1/2" NPT hole in the junction box
- Loosen the M5 bolt and adjust the installed angle as your request, and then tighten the M5 bolt. (Item ①).



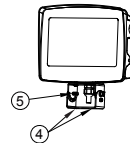
Slip Fitter Mount

- Mount fixture on 2 3/8" tenon, tighten down 4 M8 set screws (Item ②).
- Loosen the M10 recessed cup point bolt, adjust the angle as your request, and then tighten the M10 recessed cup point bolt (Item ③).

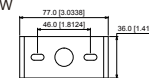


Trunnion Bracket

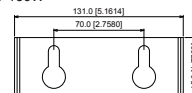
- Use two M5(15W-75W)/M10(100W-150W) diameter bolts for mounting (Item ④).
- Loosen and remove the two M4 bolts, also please loosen the another two M6 bolts, adjust the angle as your request, and then tighten all the bolts. (Item ⑤).



• 15W-75W

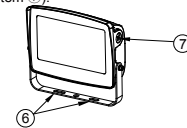


• 100W-150W



U Bracket

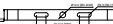
- Use two M8(15W-75W) / M10(100W-150W) diameter bolts for mounting (Item ⑥).
- Loosen the M6(15W-75W) / M8(100W-150W) recessed cup point bolts, adjust the angle as your request, and then tighten the M6(15W-75W) / M8(100W-150W)recessed cup point bolt (Item ⑦).



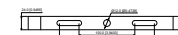
• 15W-30W



• 55W-75W



• 100W-120W



• 150W

