

Date		Project	
Type		Part Number	



ALL-IN-ONE PERFORMANCE LIGHTING

FLARE Series

Slim Round Canopy

The Flare series Slim Round canopy is DLC Premium listed and ETL for wet locations with a rating of IP65. It's quick to install and is the ideal retrofit solution for 70-250W HID garage and canopy luminaires. Integrated with our newest selectable CCT and wattage for your convenience. Aesthetically pleasing construction, low-profile design with die-cast aluminum housing and shatter-resistant polycarbonate prismatic lens.



PRODUCT FEATURES

- Aluminum Alloy Construction
- Polycarbonate Lens
- White Powder-Coated Finish
- Operating temperature: -40°F to +104°F (-40°C to +40°C)
- IP65 Rated Wet Location
- 0-10V Dimming
- Rated Lifespan: L70 ~100,000 hrs
- 10 year warranty

KEY SPECIFICATIONS

Voltage	120-347V
Wattage	Selectable Wattage R1: 25/30/35/40W R2: 45/55/65/75W
Efficacy	130 lm/W
Power Factor	>0.9
CCT	Selectable: 3000K, 4000K, 5000K
CRI	>80
Lumens	Up to 9,750 lm
Beam Angle	140°
Dimming	0-10V
Mounting	Surface
Applications	Commercial, Warehouse, Gas Stations, Parking Garages


 EMERGENCY
 BACKUP READY

 RENO SMART
 NLC SYSTEM

 STANDALONE
 SENSOR OPTIONS

SPECIFICATIONS – R1 MULTI POWER (25/30/35/40W)

Order#	Model	Wattage	Voltage	Lumens	Efficacy	CCT
R52013	RENO-CP-40W-MW-DV-MCCT-R1	25/30/35/40W	120-347V	3250/3900/ 4550/5200 lm	130 lm/W	30/40/5000K

SPECIFICATIONS – R2 MULTI POWER (45/55/65/75W)

Order#	Model	Wattage	Voltage	Lumens	Efficacy	CCT
R52014	RENO-CP-75W-MW-DV-MCCT-R2	45/55/65/75W	120-347V	5850/7150/ 8450/9750 lm	130 lm/W	30/40/5000K

DLC CERTIFICATION

Order#	Model	Application	DLC Standard	DLC Premium
R52013	RENO-CP-40W-MW-DV-MCCT-R1	Parking Garage Luminaires	–	S-3IRZ6C
R52014	RENO-CP-75W-MW-DV-MCCT-R2	Parking Garage Luminaires	–	S-CHB1EM

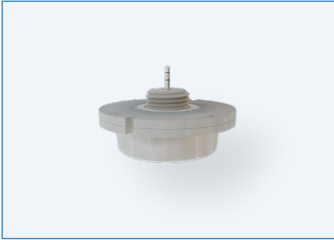
ACCESSORIES – EMERGENCY LED DRIVERS



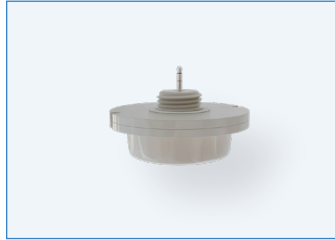
R83010
RENO-EM-EX15
All Weather Emergency Driver
(100-347V AC, 50-60Hz, 15W)

Order#	Model	Description
R83010	RENO-EM-EX15	All Weather Emergency Driver (100-347V AC, 50-60Hz, 15W)

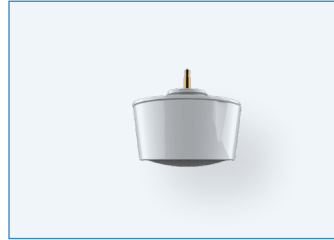
ACCESSORIES – STANDALONE SENSOR & REMOTES



R71002
RENO-SENSOR-MW-H
Bi-Level Microwave Sensor



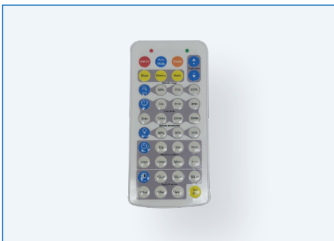
R72001
RENO-SENSOR-PC-S
Photocell Sensor



R74004
RENO-SENSOR-PIR3.5-PH15M
Long Detection Range PIR
Sensor



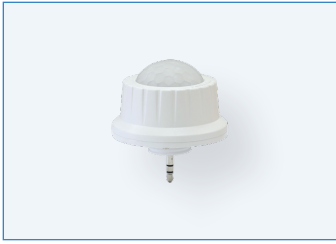
R73002
RENO-REMOTE-H
Remote Control for Standalone
Sensors (With Screen)



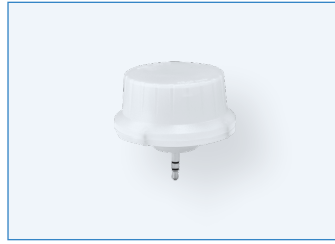
R73005
RENO-REMOTE-H-ECO
Remote controller for Highbays
(without screen)

Order#	Model	Description
R71002	RENO-SENSOR-MW-H	Bi-Level Microwave Sensor
R72001	RENO-SENSOR-PC-S	Photocell Sensor
R74004	RENO-SENSOR-PIR3.5-PH15M	Long Detection Range PIR Sensor
R73002	RENO-REMOTE-H	Remote Control for Standalone Sensors (With Screen) Note: Only 1 needed per project.
R73005	RENO-REMOTE-H-ECO	Remote Control for Standalone sensors (Without Screen) Note: Only 1 needed per project

ACCESSORIES – RENO SMART NLC SENSORS



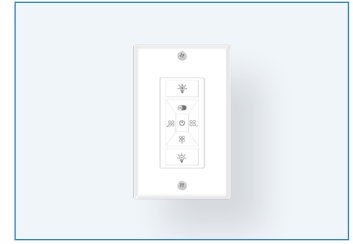
R75001
RENO-RS-JK-BPDN-12V
Bluetooth 3.5mm Jack PIR
Sensor for RENO Smart NLC
System



R75002
RENO-RS-JK-BMWM-12V
Bluetooth 3.5mm Jack
Microwave Sensor for RENO
Smart NLC System



R75201
RENO-RS-GW-BCNW
Ceiling Mounted Gateway for
RENO Smart NLC System



R75302
RENO-RS-RC-BNNG
7-Key Smart Wall Switch for
RENO Smart NLC System

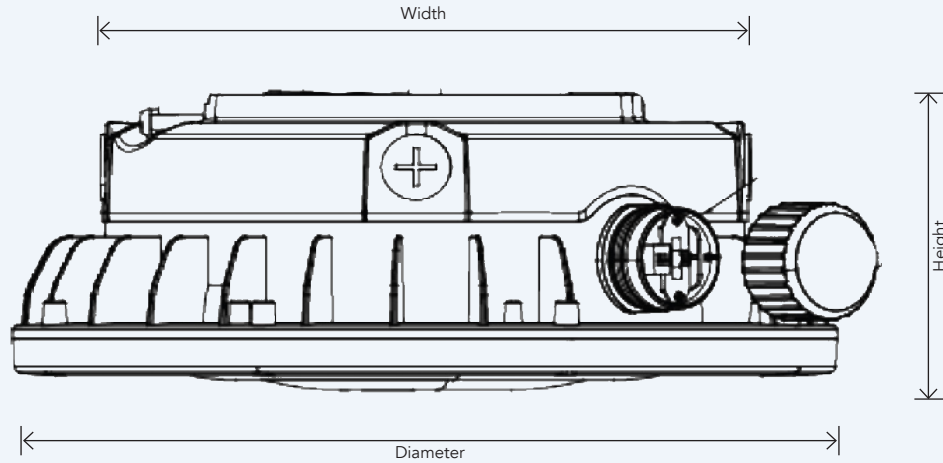


R75301
RENO-RS-RC-BNND
5-Key Reset Remote Controller

Order#	Model	Description
R75001	RENO-RS-JK-BPDN-12V	Bluetooth 3.5mm Jack PIR Sensor for RENO Smart NLC System
R75002	RENO-RS-JK-BMWM-12V	Bluetooth 3.5mm Jack Microwave Sensor for RENO Smart NLC System
R75201	RENO-RS-GW-BCNW	Ceiling Mounted Gateway for RENO Smart NLC System
R75302	RENO-RS-RC-BNNG	7-Key Smart Wall Switch for RENO Smart NLC System
R75301	RENO-RS-RC-BNND	5-Key Reset Remote Controller

DIMENSIONS

R1/R2



Diameter: 10.2" (259.1 mm)

Width: 7.8" (198.1 mm)

Height: 3.9" (99.1 mm)

Weight: 6 lbs (2.72 kg)